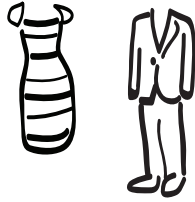


Dress for Success

suit

- Choose a two piece matching suit, usually in dark colors
- Bottoms can be a skirt or pants
- A conservative dress of modest length is also acceptable



tops



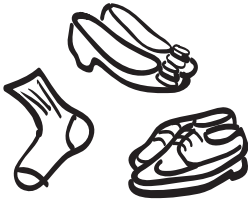
- Pick a shirt with a conservative color or pattern, button ups are common
- Usually worn under a suit jacket
- Choose a shirt with a modest neckline and avoid see-through fabrics

bottoms

- Choose slacks or a skirt rather than jeans or leggings
- Avoid the low-rise style bottoms
- For a skirt, make sure it ends just above the knee



feet



- Socks: Dark to match shoe color
- Nylons: Should blend in with the outfit and be snag-free
- Shoes: Dark, formal shoes with closed toes (heel height should be conservative)

extras

- Make sure accessories match outfit in style and color
- Keep quantity to a minimum to avoid distracting the interviewer
- Ties should complement the suit and shirt colors



Recommended professional dress may differ by industries and environments. If you have any further questions, visit the Career Center or check out our website:

www.colostate.edu



For more professional dress ideas take a look at the CSU Career Center Pinterest profile

Colorado State University

An equal access and equal opportunity university